



Florida Vital Statistics

Florida Births

There were 224,403 resident live births in Florida in 2022, 8,214 (3.8%) more than the year prior. In 2007, there was a record 239,120 resident live births in the state.

Most of the resident births in Florida were to white mothers (Figure 1).

Figure 1 - Florida Resident Births by Mother's Race 2022

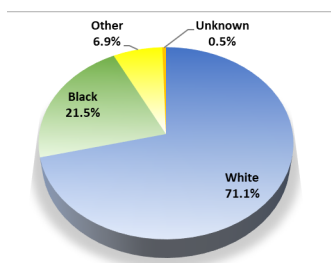


Table 1 - Florida Live Birth Rates* by Mother's Race 2022

Florida		
Total	White	Nonwhite
10.0	9.3	12.3

Florida's birth rate had been hovering between 11.1 and 11.4 from 2010 to 2016, falling more recently to 10.3, 9.7, 9.8, 10.0 in 2019, 2020, 2021, and 2022, respectively. Birth rates continue to be higher for nonwhites than whites, 12.3 versus 9.3 (Table 1). In 2022, the birth rate for Hispanics (regardless of race) was 12.4, while Non-Hispanics was 9.1. Hispanic births represent 33.3 percent of all births in the state.

Table 2 shows the number of live births by age and race of the mother. Overall, 43.8 percent of all births are to women aged 20-29, while 74.6 percent are to women aged 20-34. The highest number of births are to women aged 30-34, representing 30.8 percent of total births.

Table 2 - Florida Resident Births by Age and Race of Mother

Mother's Age	Mother's Race				Total
	White	Black	Other	Unknown	
<15	72	40	8	1	121
15-17	1,206	614	113	10	1,943
18-19	3,945	1,830	373	47	6,195
20-24	25,351	9,533	2,078	183	37,145
25-29	43,764	13,407	3,734	287	61,192
30-34	50,648	12,893	5,166	362	69,069
35-39	27,994	7,491	3,173	192	38,850
40-44	6,198	2,216	738	54	9,206
45+	456	144	66	6	672
Unknown	4	1	0	5	10

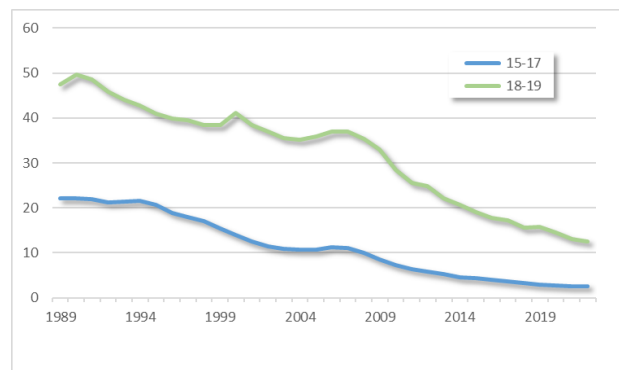
Note: Totals may differ from those in text due to missing data on age and/or race.
*Rate per 1,000 women.

Teen Births

Teen births (to mothers aged 15-19) accounted for 3.6 percent of all births in 2022. These births represented 3.2 percent of births to white mothers and 4.6 percent to nonwhite mothers. Birth rates were higher for nonwhites than whites (7.9 vs 5.7), even though the number of births to teens was more for whites than nonwhites (5,151 vs 2,930).

Teen birth rates are higher for older teens (ages 18-19) than for younger teens (ages 15-17). Both rates had been trending downward over time, as shown in Figure 2. In 2022 there were 2.5 births per 1,000 girls aged 15-17 and 12.6 births per 1,000 girls aged 18-19. Since 1989, birth rates hit a high of 22.2 for girls aged 15-17 in 1989 and 49.6 for girls aged 18-19 in 1990.

Figure 2 - Florida Teen Birth Rate* by Age



Unwed Mothers

In general, the percent of live births to unwed Florida mothers had been steadily increasing, representing 15.0 percent of all births in 1970, 22.9 percent in 1980, 31.7 percent in 1990, 38.2 percent in 2000, and 47.5 percent in 2010. This percentage appears to have peaked in 2012 and 2013 at 48.0 percent, before it fell to 46.1 percent in 2022. For white mothers, 40.9 percent of live births was to an unwed woman, while for nonwhite mothers this percentage was 59.0 percent.

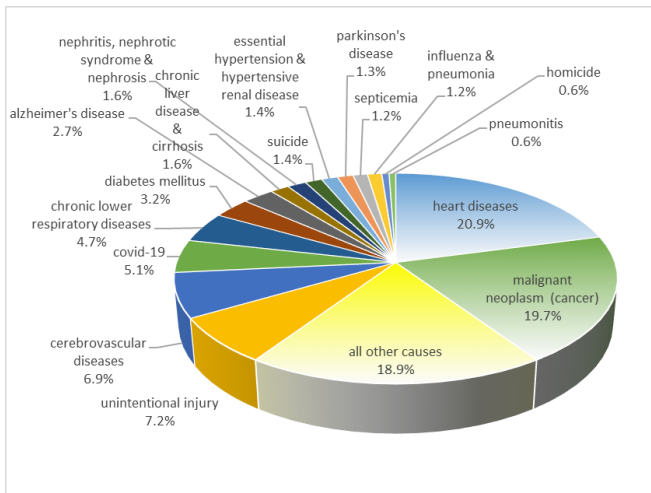
Florida Deaths

There were 238,953 resident deaths in Florida in 2022, an decline of 8.5 percent from 261,246 in 2021. As shown in Table 3, male death rates typically equal or exceed female death rates by age group. Also, for most age groups, nonwhite death rates equal or exceed the death rates for whites.

The two major causes of deaths in Florida in 2022 were heart diseases and cancer (Figure 3), representing 40.5 percent of resident deaths in the state. The number of deaths due to these two major causes typically increases as the population ages. As such, the percentage of deaths due to heart diseases and cancer is greatest for those 65 and older, representing 83.4 percent and 76.2 percent of the deaths for these two causes, respectively. Deaths due to COVID-19 has fallen to 5.1 percent of all deaths in the state, down from 13.2 percent the year prior.

For residents between age 1 and 44, unintentional injury (accidents) was the primary cause of death, representing 42.8 percent of the deaths in this age group.

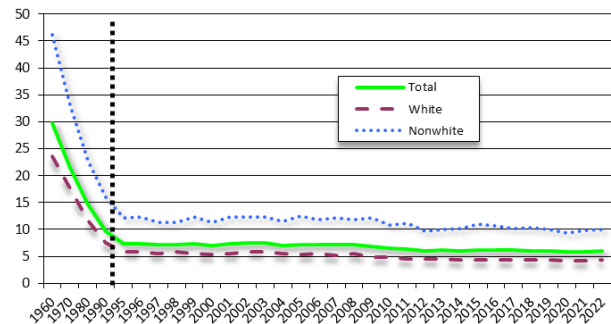
Figure 3 - Florida Resident Deaths by Major Cause 2022



Florida Infant Mortality

In 2022, 1,346 babies died prior to their first birthday. The infant death rate was 6.0 deaths per 1,000 live births. Figure 4 displays decade data (1960 through 1990) and annual data (1995 through 2021). Through the mid-1990s, infant mortality rates trended downward for both whites and nonwhites.

Figure 4 - Florida Infant Mortality Rate



Florida Natural Increase

Natural increase is defined as the difference between births and deaths. Since 1989 and prior to 2020, Florida's natural increase remained positive (number of annual births were greater than the number of annual deaths in Florida). In 2020, Florida's natural increase turned negative.

Figure 5 - Florida Natural Increase

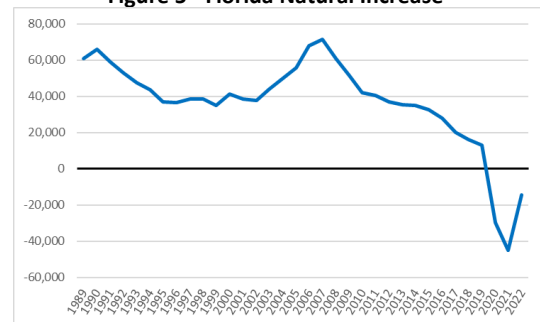


Table 3 - Florida Resident Deaths by Age and Race 2022

Age	White Males		White Females		Nonwhite Males		Nonwhite Females		Total*	
	Number	Death Rate**	Number	Death Rate**	Number	Death Rate**	Number	Death Rate**	Number	Death Rate**
<1	384	4.74	306	3.96	341	10.73	294	9.51	1,346	6.09
1-4	86	0.28	71	0.24	62	0.41	44	0.30	264	0.29
5-9	49	0.12	31	0.08	36	0.18	30	0.16	146	0.12
10-14	73	0.16	63	0.15	35	0.17	35	0.18	207	0.16
15-19	305	0.66	144	0.33	213	1.14	72	0.40	737	0.58
20-24	631	1.35	254	0.57	367	1.98	104	0.56	1,358	1.06
25-34	2,421	2.31	978	0.97	948	2.44	426	1.08	4,779	1.68
35-44	3,518	3.31	1,848	1.80	1,203	3.57	664	1.82	7,240	2.60
45-54	5,683	5.25	3,299	3.07	1,693	5.82	1,171	3.61	11,871	4.28
55-64	13,977	11.54	8,547	6.71	3,168	12.06	2,366	7.79	28,126	9.22
65-74	22,896	21.66	15,906	13.27	4,299	24.67	3,435	15.63	46,609	17.59
75-84	30,438	49.74	25,418	35.30	3,619	49.88	3,613	36.73	63,152	42.02
85+	28,003	137.20	38,496	133.40	2,492	127.19	4,069	114.01	73,103	133.41
Unknown	6		2		0		0		15	
Total	108,470	12.80	95,363	10.98	18,476	7.39	16,323	6.12	238,953	10.70

*Totals may not add due to unknown. **Death Rate per 1,000 population. Data in this report are from the Florida Vital Statistics Annual Report 2022, Florida Department of Health,